

# Antique Outboard News

SOUTHERN CALIFORNIA CHAPTER

MAY 2010

Volume 6 Issue 3

## Antique Outboard Meet at Lake Arrowhead on June 5<sup>th</sup>



*Our next Antique Outboard Club meet will be in Lake Arrowhead Village at the sea wall on Saturday, June 5, 2010. This meet will be in conjunction with the Lake Arrowhead Wooden Boat Show. Our next official Antique Outboard Meet following this meet will be at Mission Bay in San Diego on Saturday, August 7, 2010. Above club members Kip Fjeld, Les Gunnarson, Frank Fowler and Paul Brinkman, Jr, enjoy last year's meet in Lake Arrowhead.*

AN

Antique Outboard News  
1240 Logan ave. M  
Costa Mesa Ca. 92626

Frank Fowler  
4918 Coldbrook  
Lakewood, CA 90713

90713+1824



SPECIAL RATES FOR CLUB MEMBERS!

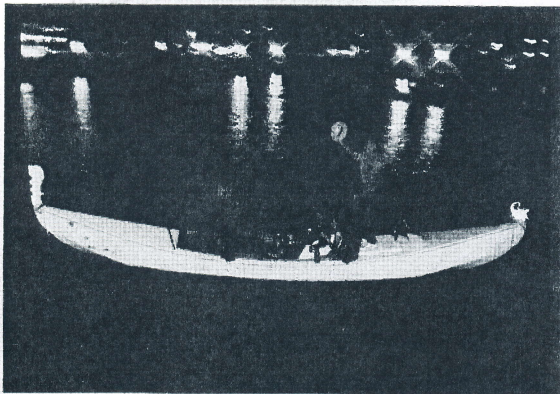


## Gondola Romance



More than  
just a  
boat ride!

Newport's original  
canopy covered  
motorized gondolas.



3400 Via Oporto, Suite 202  
Newport Beach, CA 92663

**(949) 675-4730**

[www.GondolaRomance.com](http://www.GondolaRomance.com)

## Seafari Harbor Cruises!



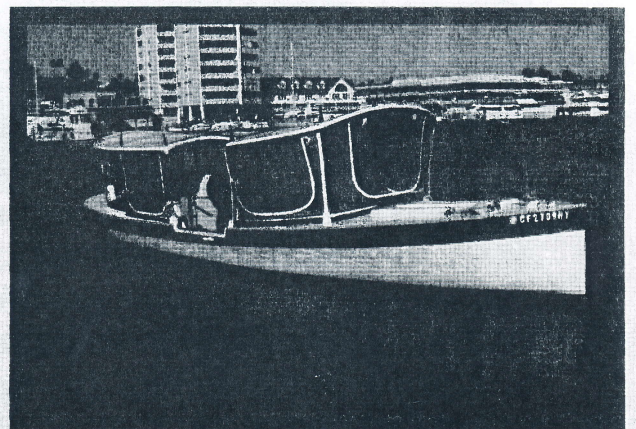
### Ocean Sea Lion Cruises!



One and a half hour Cruise  
\$225.00 for Maximum 16 guests.

Price includes Boat & Captain  
Ice cooler, plates, cups, napkins  
and utensils, music, pillows and blankets

Maximum of 16 guests



**SEAFARI HOTLINE**  
**(949) 675-4730**



*Past President Lee Kinnel, Tommy Lockwood, George Kent and Al Jarvis enjoy the March meet at Puddingstone Dam. We had a great turnout and the weather was just perfect. At this March meet our members decided to institute annual club dues in the amount of \$20.00 commencing June 1, 2010. These dues will cover the costs of postage and publishing the bi-monthly newsletter. In addition all members and guests attending club meets will receive a free lunch. Please complete the Membership Application form below and send it and a check for twenty dollars to : Southern California Chapter Antique Outboard Club at 1240 Logan Ave, "M," Costa Mesa, Ca 92626.*

*The Antique Outboard Motor Club, Inc., Southern California Chapter*

**MEMBERSHIP APPLICATION**

Name \_\_\_\_\_  
 Address \_\_\_\_\_  
 City \_\_\_\_\_ State \_\_\_\_\_ Zip \_\_\_\_\_  
 Date \_\_\_\_\_ Telephone \_\_\_\_\_

- What do you receive for your 1 year membership in our Southern California Chapter?**
1. Our local Chapter Newsletter, rated one of the best in Nation. (Approximately 6 per year)
  2. Free classified ads in our Newsletter for both Wanted & For Sale items.
  3. Postal notification of all local dry and wet meets. (Approximately 6 per year)
  4. Members to help you find those difficult parts to locate and help you sell your unused items.
  5. A great group of outboard enthusiasts with whom to socialize and have fun!
  6. Questions? *CALL - PAUL @ 714-396-3041*

## Patent Brief:

# Ole Evinrude's 1911 Motor Patent

The year is 1910 and Old and Bess Evinrude have been operating their successful outboard motor business for one year. Their company is flourishing and they are expanding sales. It is time to assure that Ole's new motor design will not be copied and on September 16 they file for the motor patent illustrated in the figure. The patent office is swamped with patents and the patent is not issued until August 22, 1911.

The drawing shown in the figure illustrates several of the motor features described in the patent. The first stage of these is that the propeller angle and depth are adjustable. Few motors in this early era had angle adjustments so that they could be adjusted for any transom angle. Very few motors even as late as the teens could be adjusted for propeller depth. Ole, as in many other cases was ahead of the times.

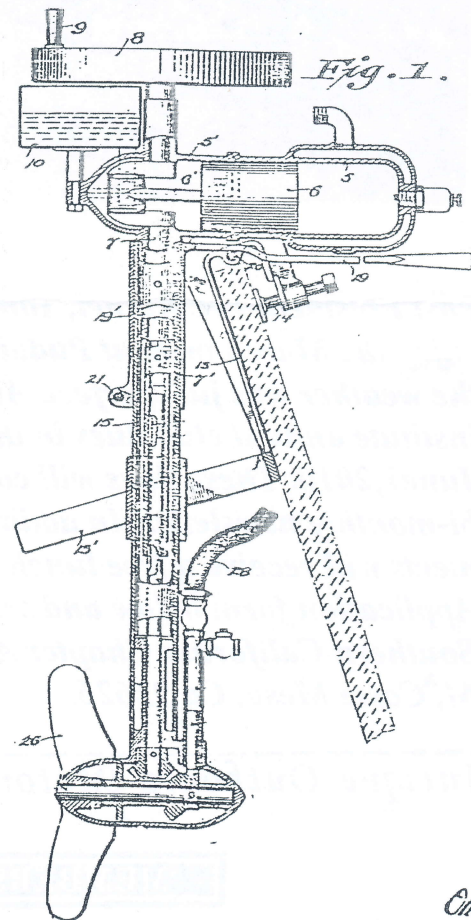
The second main feature of the motor was that steering could be accomplished by swivelling the entire lower unit by moving the tiller. Other motors at this time used rudder steering. The angle between the prop shaft axis and the motor power head could be changed so that the motor could be used when clamped to the side of the boat. It could thus be used on double ended boats. The transom (or gunnel) clamp is described in detail and may have originated with Ole and may have been conventional practice. The remainder of the motor follows conventional two-cycle engine design of the 1910 period and is not specifically described in the patent.

In retrospect the patent seems almost non eventful but it represents the beginning of a long succession of patents issued to the Evinrude Company and is thus a landmark in the patent history of the industry.

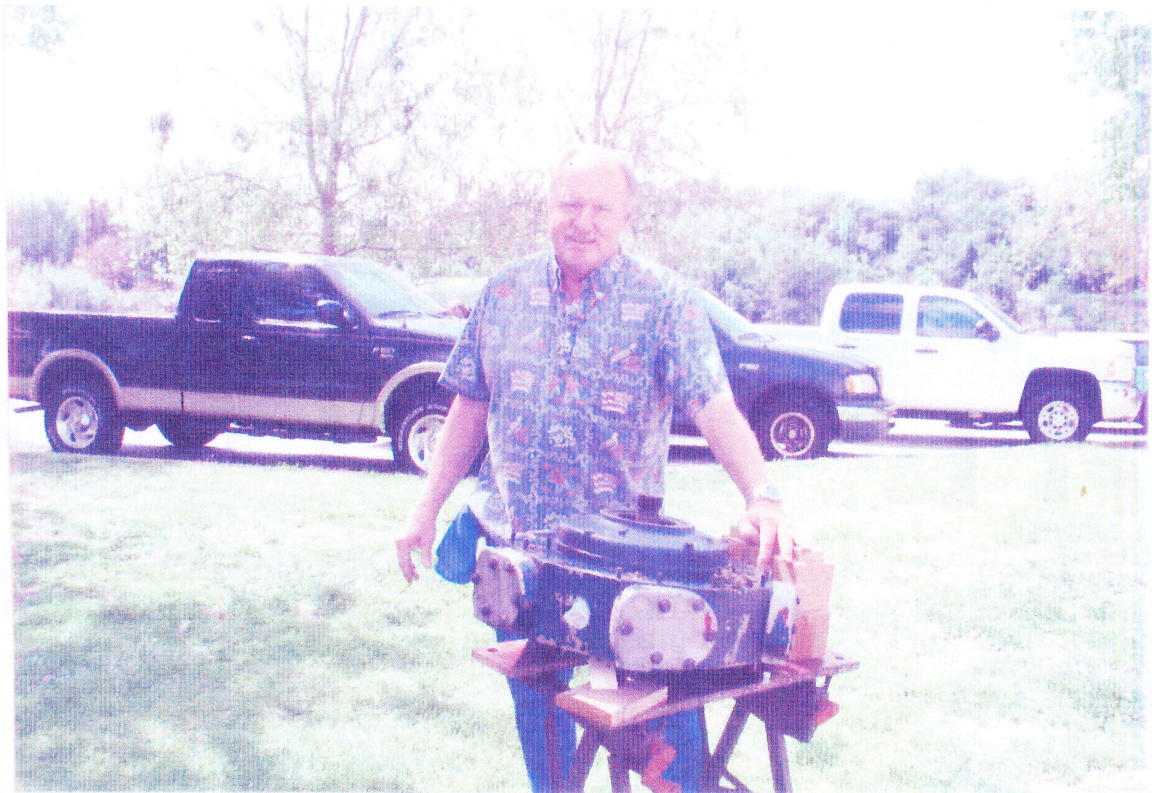
O. EVINRUDE.  
MARINE PROPULSION MECHANISM.  
APPLICATION FILED SEPT. 16, 1910.

1,001,260.

Patented Aug. 22, 1911.



Inventor:  
Ole Evinrude  
By *Clifford H. Jones*  
Attorney.



*Club member Frank Fowler brought a spare head for his amazing RILEY Antique Outboard Motor. Frank has begun reassembling this great find. Best of luck Frank!*



*Club President, Paul Brinkman, Jr. proudly displays his restored 1936 Antique Neptune Outboard motor at the March Puddingstone Meet.*

# THE SOURCE

## OMC PARTS

### LEE'S MARINE

13910 Struikman Rd., Cerritos, CA  
Telephone 714-739-1003

### SEA-WAY MARINE, INC.

2505 HARBOR AVENUE, S.W. Seattle,  
Washington, 98126

Telephone 206-937-7373

### COAST OUTBOARDS

#### RICK CALVIN

51 K Street  
Chula Vista, California  
Telephone 619-498-1220

## MARTIN PARTS

### RUSS LARSON

1499 County Road #11  
Mead, NE 68041-0449  
Phone: 402-624-2345

## SCOTT ATWATER PARTS

### DON WEBB

340 Dry Bridge Road  
Mexico, NY 13115  
Telephone: 315-298-5708

## MERCURY PARTS

### BELK'S MARINE SUPPLY, INC.

2014 Parker Ave.,  
Holmes, PA 19043-1415  
Telephone: 610-532-4344

### GRUBB'S MARINE

(send .33 for catalog)  
402 Walnut Street  
Spring City, PA 19475  
Telephone: 610-948-8855

### DICK SHERRER MARINE, INC.

12328 E. Firestone Blvd.  
Norwalk, CA 90650  
Telephone: 562- 868-9809

## ELGIN, SCOTT, WESTBEND PARTS

### LAING'S OUTBOARD MOTORS

Telephone 1-800-463-9001

## DECALS

### DECAL HEADQUARTERS

Telephone: 410-822-1740

### COAST OUTBOARDS

Telephone: 619-498-1220

## CATALOGS & MANUALS

### OMC manuals and parts catalogs

#### KEN COOK CO.

P.O. Box 25355  
9929 W. Silver Springs Dr.  
Milwaukee, Wisconsin 53225

#### INTERTEC PUBLISHING

P.O. Box 12901  
Overland Park, KS 66282-2901  
Telephone: 1-800-262-1954

Fax: 1-800-633-6219

#### DON DWIGGINS

149 East Bay  
Atkins, Arkansas 72823  
Telephone: 501-641-2413

## PROPELLERS

### YORK PROPELLERS

JOHN YORK  
1631-B N. Placentia  
Anaheim, California 92806  
Telephone: 714-773-5444

## GAS TANK DENT REMOVAL

(Go through Jack Holtwick)

Call Jack at;

Telephone: 818-347-1987

## GASKETS

Vintage Motor Gaskets to fit Mercury  
Outboards 1958 and older. Call or write  
for catalog:

#### DOUG BROOKE

604 W. 19th  
Spokane, WA 99203  
Telephone: 509-747-0517

## RUBBER GRIPS

Send \$1.00 for catalog-5 to:

#### FOX GRIP, INC.

5181 Greencroft Dr.  
Dayton, Ohio 45426  
Telephone: 937-837-8783

## MAGNETOS

(Restore/Repair):

#### Jack Hurt

#### J&M CAROUSEL

1711 Calavaras Drive  
Santa Rosa, CA 95405  
Ph/Fax: 707-544-1026  
Ph/Fax: 800-789-1026